

# Model CE35 Case Erectors



**Optional Right Angle  
Vertical Magazine**



**Horizontal  
Case Magazine**

**Robust, Compact Case Erector at Speeds up to 35 CPM.  
New Ultra Small RSC & HSC Model Now Available!**

Pearson's CE35 Case Erectors are easy to use, highly reliable machines capable of erecting and bottom sealing RSC, HSC, CSSC, and RSC w/Integral Divider cases with either tape or hot melt glue closure at speeds up to 35 cases per minute. Small footprints makes them ideal for production areas and optional low-level, vertical magazines makes it easy to load blanks into the machine for erecting.

All CE35's are ruggedly built to provide 24/7 output for your most demanding applications. The CE35 Intermediate Frame models are the answer for larger case ranges.

Designed to meet the growing demand for smaller case sizes with lower product counts, ultra small RSC and HSC cases as small as 5"x3.5"x3.5" can now be erected with the new CE35-UG Case Erector.

The CE35's utilize two styles of case magazines, a standard horizontal magazine or an optional vertical magazine. The inline horizontal magazine utilizes powered chain advancement for the knock-down blanks. The vertical magazine picks and feeds knock-down blanks into horizontal rollers for smooth operating reliability and blank transfer.

Once in the case erector, blanks are advanced to the forming section where vacuum cups on major flaps open the blank, eliminating interference of minor flaps. The case is then advanced by flights through flap folders and plows to ensure positive set-up, square corners, and a tight seal. The new design of the CE35's makes them capable of erecting cases with poor scoring or over-gluing of manufacturer's joints.

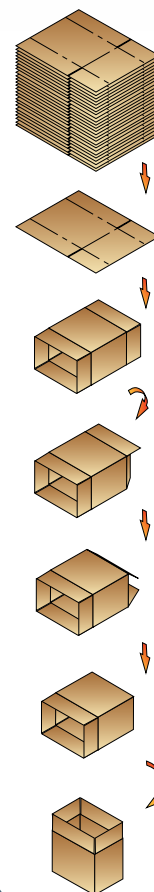
With a simplified design, the CE35's are equipped with quick-release kip handles and scales for fast, no-tool changeover with optional quick change mandrels. An operator panel view guides the operator through the easy changeover process.

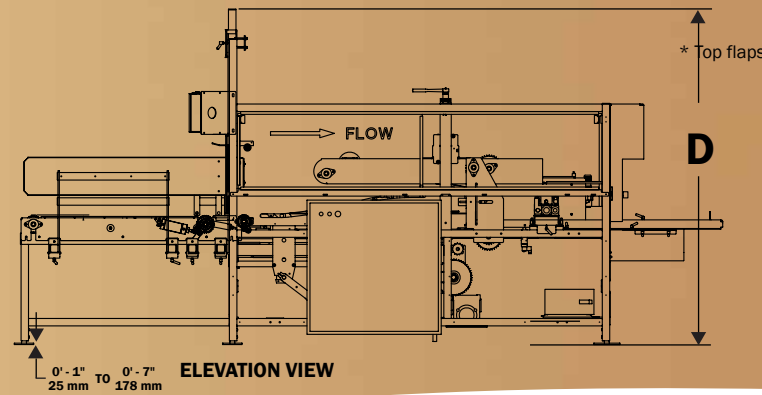
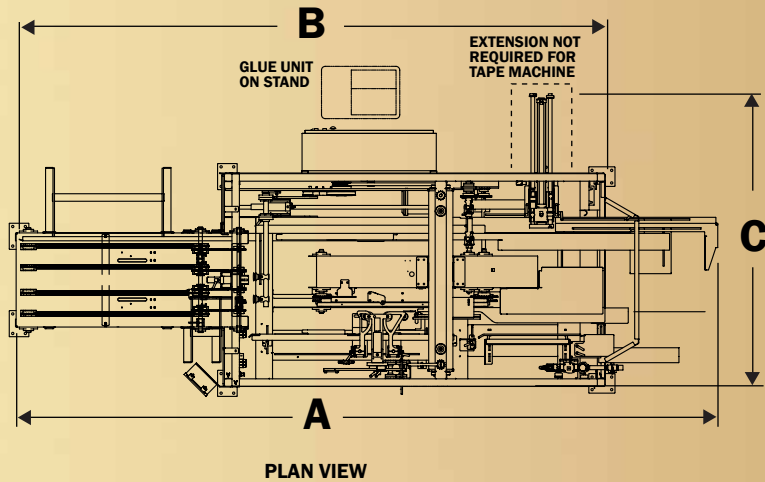
The CE35's offer the following features:

- **Allen-Bradley® PLC**
- **Allen-Bradley® Variable Frequency Drive**
- **Allen-Bradley® PanelView Operator Interface**
- **PackML compliant standard**
- **Nordson® Adhesive Melter**
- **Dekka® Pressure Sensitive Tape Head**
- **Venturi vacuum generators**
- **Electrically interlocked safety guard package**
- **Energy Saving Mode**
- **1/6 Speed Jog-Shuttle Control**
- **Quick 3-5 minute changeover**
- **UL® Listed Control Panel**
- **Stainless steel construction optional**

#### **"24/7 Any Time, Every Time Support"**

Like all Pearson products, the CE35 is backed by Pearson's experienced factory professionals as well as one of the largest teams of PMMI certified regional service technicians in the industry, available 24-hours a day, 7-days a week - worldwide.





## UTILITY REQUIREMENTS CE35

### CE35-G

#### Electrical:

230/460V, 3-phase,  
60 Hz Std., 9.58 kVA

#### Pneumatic:

1.60 SCF/Cycle @ 80 PSI  
(0.045 m<sup>3</sup>/cycle @ 551.2 KPa)

#### Shipping Weight:

CE35-G - 3,350 lbs. (1508 kg)  
CE35-15G - 5,120 lbs. (2306 kg)



### CE35-T

#### Electrical:

230/460V, 3-phase,  
60 Hz Std., 5.19 kVA

#### Pneumatic:

1.00 SCF/Cycle @ 80 PSI  
(0.028 m<sup>3</sup>/cycle @ 551.2 KPa)

#### Shipping Weight:

CE35-T - 3,200 lbs. (1453 kg)  
CE35-20T - 5,120 lbs. (2306 kg)

### CE35-UG

#### Electrical:

230/460V, 3-phase,  
60 Hz Std., 9.58 kVA

#### Pneumatic:

1.35 SCF/Cycle @ 80 PSI  
(0.038 m<sup>3</sup>/cycle @ 551.2 KPa)

#### Shipping Weight:

CE35-UG - 3,235 lbs. (1508 kg)



## ERECTED CASE SIZE RANGES

	LENGTH	WIDTH	DEPTH*	OPEN DEPTH**
<b>CE35-T</b>	8.75" - 23.5" (222 - 597 mm)	5" - 16" (127 - 406 mm)	5.625" - 18.5" (143 - 470 mm)	8.125" - 21" (152 - 533 mm)
<b>CE35-G</b>	8.75" - 23.5" (222 - 597 mm)	5" - 16" (127 - 406 mm)	3.5" - 18.5" (89 - 470 mm)	6" - 21" (152 - 533 mm)
<b>CE35-20T &amp; CE35-15G</b>	12" - 30" (305 - 762 mm)	8" - 24" (203 - 610 mm)	4.75" - 26" (121 - 660 mm)	10.5" - 30" (267 - 762 mm)
<b>CE35-UG</b>	5" - 16" (127 - 406 mm)	3.5" - 12" (89 - 305 mm)	3.5" - 14" (89 - 356 mm)	5.25" - 20" (133 - 508 mm)

\* HSC Depth = Open Depth Spec

\*\* Top flaps open, bottom flaps closed. Please consult the factory with your project specifications.

## KNOCKED-DOWN SIZES

	LENGTH	WIDTH	BOTTOM FLAP WIDTH
<b>CE35-T &amp; CE35-G</b>	13.75" - 39.5" (349 - 1003 mm)	8.5" - 29" (216 - 737 mm)	2.5" - 8" (64 - 203 mm)
<b>CE35-20T &amp; CE35-15G</b>	20" - 50" (508 - 1270 mm)	14.5" - 42" (368 - 1067 mm)	4" - 12" (102 - 305 mm)
<b>CE35-UG</b>	8.5" - 28" (216 - 711 mm)	7" - 26" (178 - 660 mm)	1.75" - 6" (44 - 152 mm)

## MACHINE SPECIFICATIONS

	Overall Length = A	Machine Length = B	Machine Width = C	Machine Height = D	Speed
<b>CE35-G</b> Hot Melt Adhesive	15' 8.25" (4775 mm)	13' 2" (4013 mm)	6' 7" (2007 mm)	7' 6" (2261 mm)	35 cpm
<b>CE35-T</b> Pressure Sensitive Tape	15' 8" (4779 mm)	13' 2" (4013 mm)	4' 9" (1448 mm)	7' 6" (2261 mm)	35 cpm
<b>CE35-15G</b> Intermediate Hot Melt Adhesive (Vertical Magazine only)	18' 11" (5766 mm)	15' 6" (4724 mm)	10' 6" (3190 mm)	7' 3" (2209 mm)	15 cpm
<b>CE35-20T</b> Intermediate Pressure Sensitive Tape (Vertical Magazine only)	18' 11" (5766 mm)	15' 6" (4724 mm)	7' 6" (2269 mm)	7' 3" (2209 mm)	20 cpm
<b>CE35-UG</b> Hot Melt Adhesive	13' 11" (4255 mm)	12' 2" (3706 mm)	6' 11" (2108 mm)	7' 9" (2371 mm)	35 cpm

All machine dimensions shown reflect horizontal magazine configuration. Consult Pearson for dimensions for right-angle vertical magazine configuration.

